

HONOLULU PRINTMAKERS

Academy Art Center
111 Victoria Street, Honolulu, Hawai'i 96814

Nonprofit Organization
U.S. Postage Paid
Honolulu Hawai'i
Permit No 297

RETURN SERVICE REQUESTED

536-5507
www.honoluluprintmakers.com
laura@honoluluprintmakers.com

October 2007

Duncan Dempster: Gift Print Artist for 2008

by Marie Carvalho



Affinity Group, 2005, lightboxes, 36 x 72 inches

It's not that Honolulu artist Duncan Dempster is being elusive, exactly, when he hesitates to describe his work: It's more that he's deeply comfortable with the unknown.

Dempster, the Honolulu Printmakers' 2008 Gift Print Artist, believes what's really important is to make his work, and to leave space for the viewer to access it on their own terms. And he's untroubled by ambiguity, that how an idea informs a particular mark is not always knowable.

"I can look at work after I'm done and not know exactly what I meant, but actually enjoy that," he says.

Born and raised in the islands, and in a family atmosphere of making (woodworking and construction), Dempster cut his teeth in the undergraduate art program at the University of California at Santa Cruz. He returned home, and earned a master's degree in printmaking from the Uni-

versity of Hawai'i at Manoa, where he now teaches intaglio and relief. His work has been exhibited in Santa Cruz, Honolulu, and most recently in Seoul, Korea, and Kansas City, Missouri.

It's little surprise, then, that Dempster grounds his art in "serious enjoyment in making": the handwork,

tools, technologies, history and accoutrements that surround printmaking. Constellations of ideas may circulate and inform his work; but they arise spontaneously from a subconscious stew. And they don't drive his work's making. What does is process: negotiating between self-as-maker and printmaking's resistant, immovable materials.

In recent years, Dempster has worked obsessively with light, building backlit light boxes that also recall his roots in construction. Some more traditional two-dimensional prints, including the Gift Print, evoke both themes: the built world and the light that illuminates form. In both bodies of work, there's often a distance and exteriority between built form and viewer, as well as a micro/macro relationship between forms, in which space collapses.

For Dempster's Gift Print, he chose to work with letterpress, an arcane, modular relief printing system for



Duncan with assistant Jackson, 2

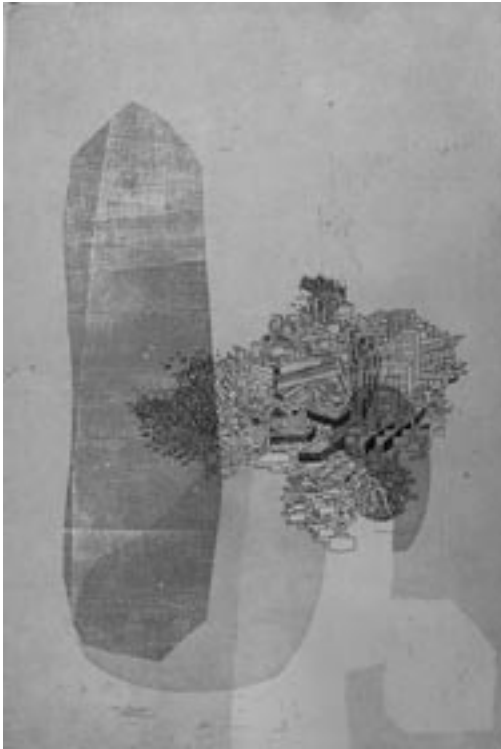


Untitled, 2006,
intaglio,
12 x 12 inches

Hard Year, 2006
intaglio,
18 x 12 inches

All My Shit, 2006
intaglio,
18 x 12 inches

image and text. An economical method to produce a large edition, letterpress also speaks to his love of printing's technical process and history. Historically, letterpress and moveable type were integral to the democratic spread of information. And in this way of printing, individual letters and hand-generated imagery "build," layer by layer, the shapes and forms that make the final image. It's a nostalgic process that's gaining new momentum.



"Letterpress," Dempster explains, "was once a tangled network of trades and skills, machines and handcraft, precision engineering and 19th-century jargon, industrial innovation and embodied energy. Today it is salvaged scrap-metal hoardings, rheumy old shop proprietors, niche paper markets, and Internet discussion groups."

The hand-printed Gift Print combines hand- and mouse-generated imagery; the latter was transferred by a third party onto relief plates, then mounted and printed on letterpress. The application of a digitally oriented plate-making process to the oldest (over 500 years) print method—one that Gutenberg shared—provides a layer of historical continuity. That sense of time is apparent, too, in Dempster's imagery: informed by graphic and industrial design, it samples visual cues from various eras.

A self-professed novice working without a contrived system in a systematic medium that doesn't lend itself to exploration, Dempster approached the Gift Print as a kind



of drawing or collage, mediated by process. The print's content evolved from open-ended technical and compositional goals, such as, he says, making an interesting cluster of forms, a mass of markings, a dynamic color pairing, or a visual cue of, say, the 1970s.

In the end, Dempster's comfort with dwelling within the uncomfortable is his ultimate gift to those who receive his exploratory "gift" print.

The Gift Print

The Honolulu Printmakers celebrates the art of printmaking by annually commissioning a special print, called the Gift Print. Although the artist is announced, the actual image is a closely guarded secret until the opening of the Annual Exhibition.

Purchases support the many activities of the Printmakers such as the Annual Exhibition, classes and workshops, visiting artists and a community access print studio.

The 2008 Gift Print is printed in an edition of 75. It is available pre-publication to Honolulu Printmakers members for \$50 and to the public for \$75. The price will increase to \$90 after February 19, 2008.

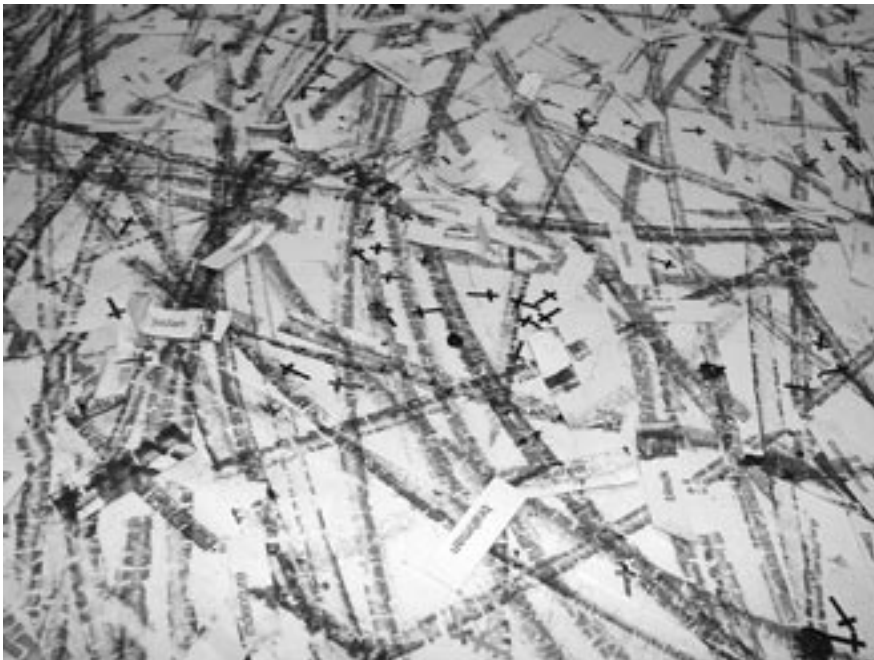
The AV Club of Honolulu
presents

TOUR DE PRINT

Tour de Print is a collaborative art project between the AV Club of Honolulu and students at McKinley High School. Students were hand picked by McKinley art teacher Rene Kitagawa to work on the interactive project. The AV Club members have had two meetings with the students. Their first visit consisted of an introduction to printmaking with a hands-on printing session. During the course of twelve meetings, the members will be working with these students to produce Tour de Print, which will consist of an interactive printmaking activity, using bicycles. This public event will take place on Saturday, November 10, at the Hawai'i State Art Museum. Anyone interested in prints and printing is invited to participate.

In preparation for Tour de Print, the AV Club conducted a practice run at the September First Friday event in China Town. They used this opportunity to put their inventions to the test. The members created a self-inking bike press that printed text that was carved into the rear tire. As the bike was ridden over a piece of canvas, it left an impression of the tire and text. While the members were riding the bike in a circle, confetti of nouns and verbs was shot over the canvas via an air cannon. The performance lasted for several hours and was well received by the public. On lookers were encouraged to shoot the air cannon and investigate the piece.

The AV Club of Honolulu consists of five members: Alan Konishi, Duncan Dempster, Michael Sweitzer, Vince Hazen and Matt Kubo. All are practicing artists who work and exhibit throughout the state of Hawai'i as well as internationally. All members share the same objective to bring printmaking into the vanguard of contemporary art.



Honolulu Printmakers 80th Annual Exhibition

February 21–March 14, 2008

Juror and Visiting Artist Laura Berman

Honolulu Printmakers invites all print artists in Hawai'i to participate in the Annual Exhibition by submitting up to three entries for jurying and to become a member of the Printmakers.

Please fill in both sides. Do not separate label; tape both sections to the upper left corner on the back of each print. Please use dark ink and print clearly.

Name	Name
Title	Title
Medium	Medium
Price framed \$ unframed \$ No. of prints available	Price framed \$ unframed \$ No. of prints available

Name	Name
Title	Title
Medium	Medium
Price framed \$ unframed \$ No. of prints available	Price framed \$ unframed \$ No. of prints available

Name	Name
Title	Title
Medium	Medium
Price framed \$ unframed \$ No. of prints available	Price framed \$ unframed \$ No. of prints available

Submit with entry payment.

Please use dark ink and print clearly.

Total number of entries _____

Name _____

Address _____

City/Zip _____

Phones _____

Email _____

Neighbor Island Entries: Wednesday, February 13

Entry Day: Friday, February 15, 2-6 pm
Academy Art Center Gallery

Notification and pick up of non-accepted work:
Sunday, February 17, 10 am –1 pm
Monday, February 18, 9 am –1 pm
Call 536-5507

Final pick up of artwork:
Saturday, March 15, 9 am–12 noon
Academy Art Center Gallery

Neighbor Island prints will be returned in their original packages.

Juror's Slide Lecture

Sunday, February 17, 4 pm, Community Room, Academy Art Center

The theme of this slide lecture is "Multiplacity: The interplay of multiples, placements and collections". Laura Berman will address this topic in relation to her own recent print-based work.

Rules

Media

Works in all hand printmaking media including lithographs, screenprints, relief, intaglio, monoprints, letterpress, artists' books and any works on paper which includes at least one of the previously stated hand printing techniques as a significant element in its execution. Electronic and digital print media may also be used in combination with the hand printmaking media.

Categories of work which are not acceptable for this exhibition include: drawings, paintings, photographs (including those which have been digitally printed), and any digital or photomechanical reproduction of work created originally in another medium. Prints must have been created within the last three years and may not have been previously shown in an O'ahu juried exhibition. The Printmakers and the juror reserve the right to exclude work that does not meet these criteria.

Presentation

All works considered for jurying must meet the professional and aesthetic standards of the Printmakers Exhibition Committee. Prints are to be framed and presented with wire for hanging. Sturdy clip frames with wire and masonite backing, no larger than 16"x20" are acceptable. Artists whose work presents unusual or difficult requirements due to size, format or method of presentation will be required to install their own pieces under the supervision of the Exhibition Committee at a prearranged time. Please call Fred Smith at 230-8606 before Entry Day if you have work that is not traditionally framed or hung with wire.

Gallery Attendants

All accepted artists (except neighbor island residents) will be required to sit the show

one shift or arrange for a substitute in advance. Failure to do so will result in a \$25 fine.

Entry Fees

\$8 per entry for members, \$15 for non-members. Students with current ID \$4 per entry. The Honolulu Printmakers will pay for return shipping for neighbor island members. Neighbor island artists who are non-members should include return postage with their entry fees.

Donations

The Honolulu Printmakers will accept donations of 20% from artists' sales. These donations support the continuation of the Annual Exhibition as well as other activities that further the advancement and appreciation of printmaking in Hawai'i.

Awards

Cash and merchandise awards will be presented as selected by the juror. Purchase awards will be selected by the buyers.

Liability

While every precaution will be taken to assure proper care of the work, neither the Honolulu Printmakers nor the Academy Art Center can assume responsibility for loss, theft, or damage to work submitted. Please make sure your work is securely presented for hanging and that all shipped work is carefully packaged in reusable containers.

Documentation

Hawai'i state law requires strict print disclosure. Please be prepared to fill out appropriate print documentation upon the possible sale of your work.

Exhibition Calendar

Neighbor Island Entries:

Wednesday, February 13

Prints should be framed with Plexiglas.

Ship in reusable packing to:

Honolulu Printmakers

1111 Victoria Street

Honolulu, Hawai'i 96814

(808) 536-5507

Non-members please include return postage with your entry fee.

Entry Day:

Friday, February 15, 2-6 pm

Academy Art Center Gallery

• *Please Note: Only 3 entries per artist will be accepted.*

Notification and pick up of non-accepted work:

Sunday, February 17, 10 am–1 pm

Monday, February 18, 9 am–1 pm

Call 536-5507

Juror's slide lecture:

Sunday, February 17, 4 pm

Community Room, Academy Art Center

Laura Berman: "Multiplacity: The interplay of multiples, placements and collections".

Opening Reception:

Wednesday, February 20, 5–7 pm

Exhibition Dates and Hours:

Thursday, February 21 – Friday, March 14

Tuesday – Saturday, 10 am–4:30 pm and

Sunday, 1–5 pm

Screenprint Workshop: Icons and Relics

February 22–24

Friday 6–9 pm

Saturday and Sunday 10:00 am–4 pm

HP Workshop

Final pick up of artwork:

Saturday, March 15, 9 am–12 noon

Academy Art Center Gallery

Neighbor Island prints will be returned in their original packages.

Print Talks

About prints for printmakers. To be announced.

The 80th Annual Exhibition and Visiting Artist Program are supported by the State Foundation on Culture and the Arts.

Laura Berman

Juror and Visiting Artist

Laura Berman works with sequence and multiples in non-traditional formats. Currently her work explores installation and interaction in combination with hand printed images. Her recent *MAGICAS* prints utilize a homemade invisible ink, requiring the audience to use a magic potion provided at the exhibit to make the prints visible for viewing. *MAGICAS* also includes a do-it-yourself magic kit entitled *Bag O'Tricks* in which the viewer is provided trick titles and hand-cut printed props to conjure their own magic show.

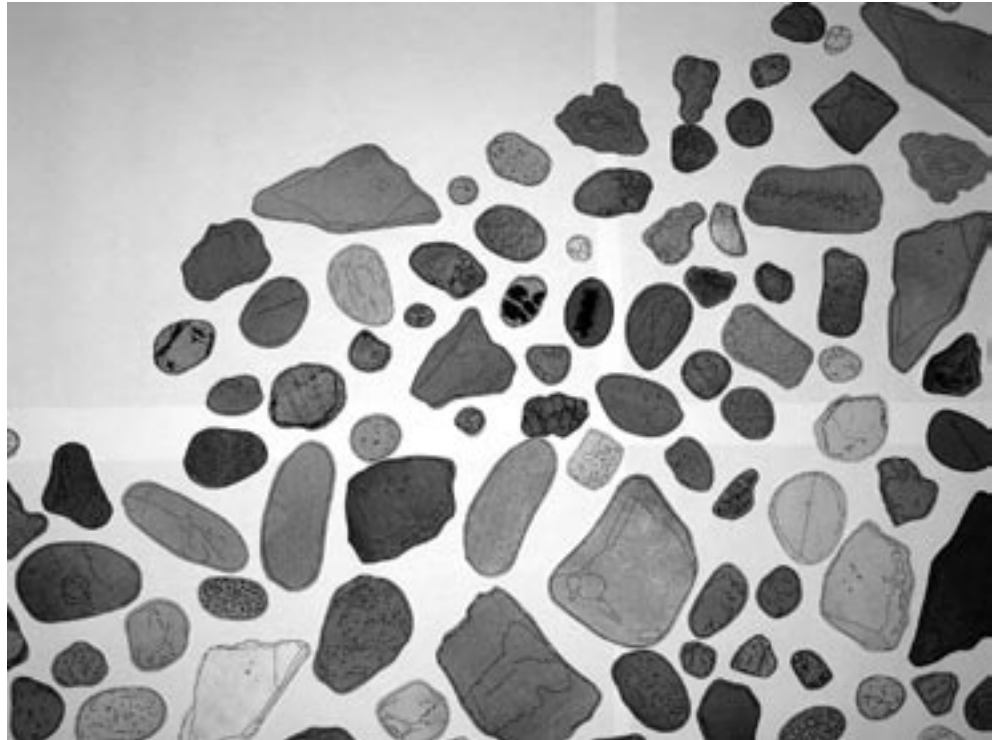
She has created site-specific exhibitions at numerous galleries and museums, including



Dalarnas Museum of the Arts – Printmaking Triennial Exhibition, Falun, Sweden; Avenue of the Arts, Kansas City, MO; CBAT Gallery, Cardiff, Wales; Artspace, Raleigh, NC; Center

for Book Arts, NYC; Telephonebooth, Kansas City, MO; Emerge Gallery Greenville, NC; H&R Block Artspace, Kansas City, MO; and Arthur Rogers Gallery, New Orleans, LA. She has been a Visiting Artist and has worked as an artist-in-residence at a number of institutions including Artspace, NC; Atlantic Center for the Arts, FL; Anderson Ranch Art Center, CO and Can Serrat International Arts Center, Spain.

Laura Berman directed the 2007 Southern Graphics Council Conference, in which 1200 printmaking enthusiasts from the world over converged in Kansas City, MO, to experience precedent-setting print events, numerous and engaging print exhibitions, and diverse dialogs and presentations that examined printmaking's relationship to other media and environments. She is currently an Assistant Professor and Interim Chair of Printmaking at the Kansas City Art Institute, where she teaches Sophomore Printmaking, Book Arts, Papermaking, Prininstallation and Silkscreen courses. She received her BFA from the New York State College of Ceramics at Alfred University and her MFA from Tulane University.



All she ever wanted was everything: Laura Berman's rock collection, 2007, 160 hand-cut monoprints, intaglio with relief roll, life-size prints corresponding to actual rock collection of 160 rocks from all over the world, ranging from 1/2 to 4 inches each.



Tumbleweed Project, 2003; silkscreen, felt, batting, thread; 130 double-sided prints, ranging from 6 to 48 inches in diameter.



Rocks and Hard Places, 2006, digital print, wood contact paper, plastic, 11 x 9 inches



Bag O'Tricks, 2005, hand-cut silkscreen prints, packaged in plastic bag with digital print label, 12¾ x 8½ inches

Screenprint Workshop: Icons and Relics

Laura Berman

Prints, like icons and relics, consist of imagery and tangible object both. Participants will explore screenprinting techniques including stencils, multi color layers and photo-based techniques to create icons and relics. Color ink mixing, registration, color and transparency, and design-based techniques will also be discussed. In addition, each student will participate in a portfolio exchange within the workshop. This workshop is suitable for both beginners and advanced printmakers.

A toolkit will be provided. This includes emulsions, acetate sheets, 2 screens, sponges, inks, printing paper. In addition please bring a blank Tshirt, plastic cups or yogurt containers for inks, hair dryer if you have. Please also bring image materials including black and white copies, opaque black drawings on acetate.

\$85, \$95 supply fee, total \$180. HP members \$65, \$95 supply fee, total \$160

Six Oahu and two neighbor island participants will be chosen by lottery. Free air travel is available for two neighbor island artists. To be considered for the lottery, please send registration form with full payment to the Printmakers by December 1. We will notify participants by December 8. Checks will be returned to those not selected.

Prestidigitation Series: #0806

Coin, Glass, Water Fabric, 2006, digital print, plastic, thread, 4¾ x 4¾ inches



Membership

Your membership supports print-making activities in Hawai'i such as exhibitions, newsletters, open houses, visiting artists, classes and demonstrations, school outreach, and a community access printing studio for Hawai'i printmakers.

\$20 Starving Artist

\$40 Studio Member may purchase the annual Gift Print at a special members discount, may register to use all workshop facilities and receive all mailings.

\$50 Friends

receive the above benefits in addition to one free day at the Workshop and 10% discount on one class during the year.

\$200 and above Patrons

receive all the above and a patron print

Order Form, Registration, Membership

Gift Print Purchase

Pre-publication \$50 Non-members \$75 After Feb. 19, 2008 \$90 \$

Visiting Artist Three-Day Workshop

Members \$65, supply fee \$95 Total \$160 \$
Non-Members \$85, supply fee \$95 Total \$180 \$

Membership Category:

\$

Total enclosed

\$

Please make checks payable to Honolulu Printmakers

Name _____

Address _____

City _____

Zip _____

Phone _____

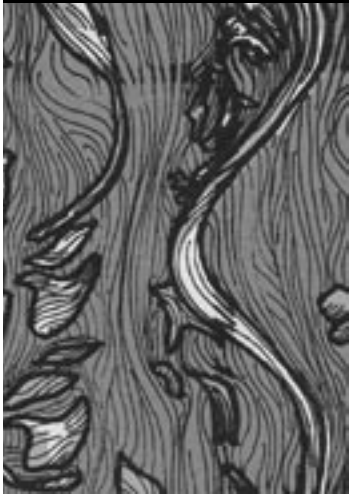
Email _____

Please return to Honolulu Printmakers

1111 Victoria Street, Honolulu, Hawai'i 96814

Phone 536-5507

Impressions Benefit Print Sale



Erika Johnson, screenprint, detail

New Dates: November 23-25
Friday, Nov 23 1-7 pm,
Saturday, Nov 24, 1-5 pm
Sunday, Nov 25, 10 am-5 pm
Preview: Friday, Nov 23, 10-12

Honolulu Printmakers
at the Academy Art Center,
1111 Victoria Street

Affordable prints
from Hawai'i artists

New prints from the *Time and Place*
portfolio, inspired by Manoa Valley

**Print delivery days
for artists:
Thursday to Sunday,
November 8-11**

Save the Date:
Saturday, October 6, 2008

PRINTS2008

Landscape of Prints,
A GREEN EVENT

Academy Art Center
Sculpture Garden

Join the
Honolulu Printmakers
in celebrating an
evening of
good impressions

Each ticket holder is en-
titled to one of the prints
on display.
Acquiring original art
was never so easy!

When your name is
drawn, you'll have a
chance to choose a print
from the gallery. Every-
one goes home with a
print!



Jeera Rattanangkoon, *Maile*, detail, wood block print

Open Print Studio

The monthly studio fee is \$40, which covers inks, press time, solvents, chemicals, stones, Plexiglas etc. Printers provide their own paper and metal plates. We have complete facilities for intaglio, relief, monotypes, lithography. A volunteer shop assistant will orientate you to the workshop, but you are expected to function independently. Printers need to be members of the Honolulu Printmakers.

Monday 9-5
Tuesday closed
Wednesday 2-9
Thursday 9-9
Friday 5-9
Saturday 1-5
Sunday 1-5

HONOLULU PRINTMAKERS

Academy Art Center
1111 Victoria Street, Honolulu Hawai'i 96814
536-5507
www.honoluluprintmakers.com
laura@honoluluprintmakers.com

Officers and Board of Directors

President Marijcke Christianson
Vice president Fred Smith
Secretary Barbara Okamoto
Treasurer Dixie Lindley
Directors Michael Harada, Vince Hazen, Erika Johnson, Gina Kerr, Carol Khewhok, Hans Loffel, Hillary Mock, Deb Nehmad, Jennifer Saville, Linda Spadaro, Margo Vitarelli, Paul Weissman, Jared Wickware, Maile Yawata, Debbie Young
Executive Director Laura Smith

Thank you to our newsletter contributors:

Designer Hans Loffel
Contributors Erika Johnson, Laura Smith, John Morita, Marie Carvalho, Fred Smith, AV Club of Honolulu, Marijcke Christianson

Supported by the State Foundation on Culture and the Arts through appropriations from the Legislature of the State of Hawai'i and by the National Endowment for the Arts, Hugh Stuart Center Charitable Trust, Electric Pencil, members of the Honolulu Printmakers